

OLDER YOUTH SERVICES

**CHILD & FAMILY SERVICES
AGENCY**

MAY 2019



1

1



YOUTH EMPOWERMENT

2

2

WHAT DOES OFFICE OF YOUTH EMPOWERMENT (OYE) DO?

Case Management

Education Support

Career Support

Transition Support

3

3

CASE MANAGEMENT SERVICES

OYE has 4 dedicated units that Provides case management SERVICES TO YOUTH, age 15-20, placed in a congregate care facility or DC foster homes (youth who reside in MD are case managed by our private partner, NCCF)

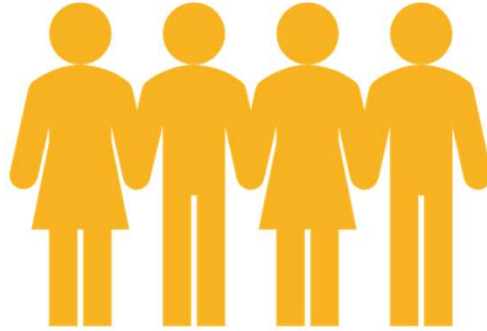
- 1 unit, The generations unit, was developed to meet the specialized needs of pregnant and parenting youth in foster care (both mothers and fathers)
- Case-carrying social workers continually explore and engage the youth's interests and strengths, birth family and other lifelong connections as supports and placement options to facilitate permanency
- All case-carrying Social workers duties include transition planning, visitation, court preparation, placement, well-being, facilitate transition meetings, and collaborate with other service PROVIDERS as needed

4

4

OLDER YOUTH BENCHMARKS

- Every child and youth will exit foster care to a well-supported family environment or lifelong connection as quickly as possible. CFSA
- Staff will support families after permanence to ensure that family connections are stable. Older youth will exit with the education and
- Skills necessary to help them become successful, self-supporting adults.



5

5

COLLEGE AND CAREER PREPARATION 9TH-12TH GRADES

CFSA has developed a new model of educational support services that maximizes the use of our education specialist staff to produce better educational outcomes for our foster youth.

The new model consists of 3 different types of service delivery:

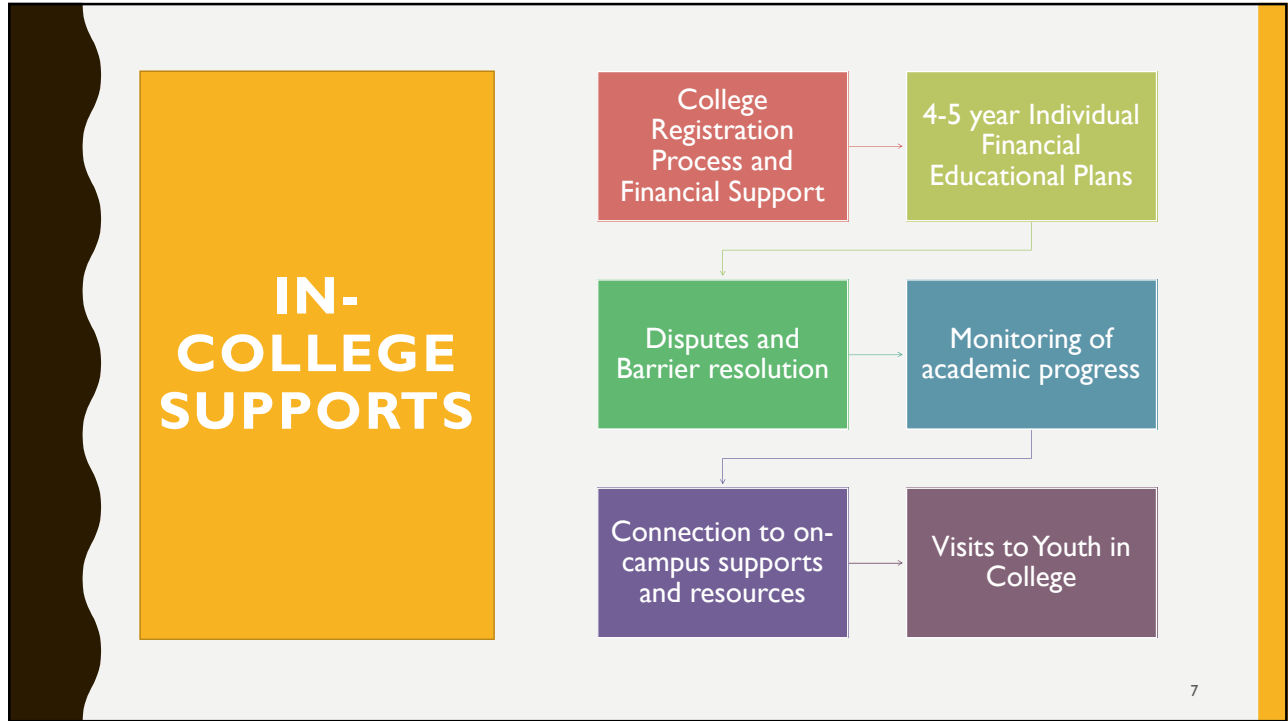
- 1) **Direct and intensive supports to our most at-risk youth** using an evidence-based Student Engagement Model, called *Check & Connect*, and other interventions
- 2) **Education specialist assignment to each supervisor and their social work units** at CFSA, NCCF and other partnering agencies to provide a clear point of contact (POC) for **consultative support** on individual cases and issues as needed
- 3) **Training and education events and incentives**

This model of services is provided by the education specialists at both OYE and the Office of Well Being.



6

6



7

YV LIFESET

YOUTH TO THE MAX SERVICES

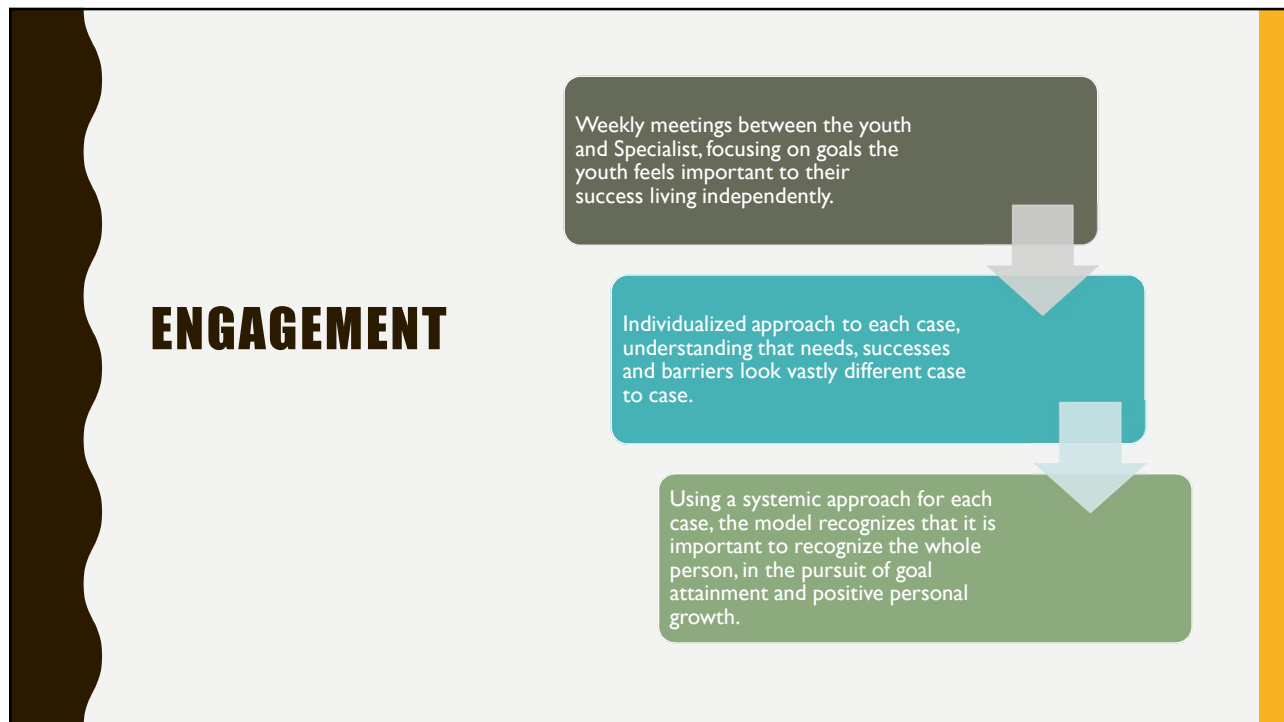
Systemic Assessment Safety Education/Vocation Maximizing Outcomes

YV LifeSet™

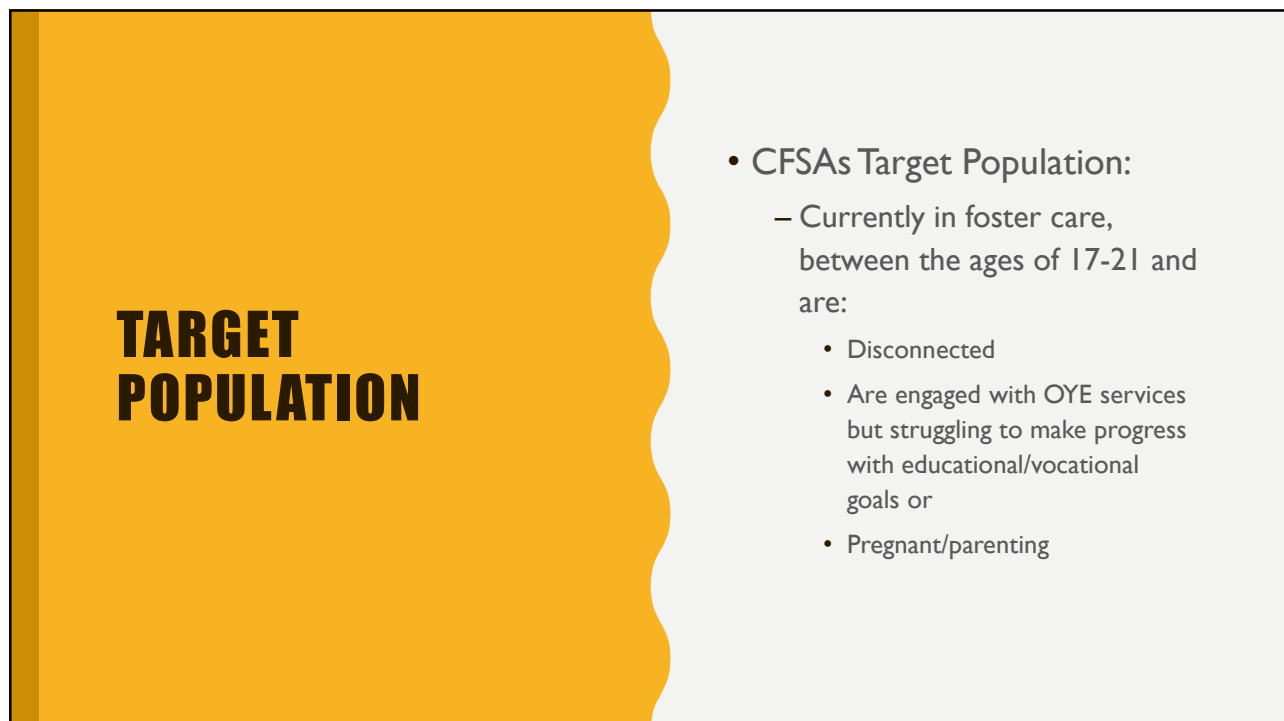
Youth Driven Comprehensive Support Networks Team Intensity of Engagement

The graphic features a large black area on the left with the text 'YV LIFESET' in white. To the right, there is a white background with a logo at the top that says 'YOUTH TO THE MAX SERVICES'. Below the logo are four icons in a row: a document with a checkmark (Systemic Assessment), a shield (Safety), a graduation cap and a person (Education/Vocation), and two people shaking hands (Maximizing Outcomes). In the center is the 'YV LifeSet™' logo, which includes a red ribbon graphic. At the bottom are four more icons in a row: two people (Youth Driven), a group of people (Comprehensive Support Networks), a group of people holding hands (Team), and a person with a gear (Intensity of Engagement).

8



9



10

PROCESS

Youth referred by SW team. Specialists will have 8 cases each, with a total of 32 youth being served initially.

Youth and Specialist complete initial assessments, build rapport and discuss goals.

Specialists have been conducting weekly sessions, and overall are seeing meaningful successes.

Youth will generally spend 6-9 months in the program, depending on youth goal attainment.

11

CAREER SUPPORTS

Subsidized Internship

- Designed to provide job experience to youth looking to enter the workforce
- Maximum of 40 hours per week at the minimum wage rate
- Can last anywhere from 3-6 months

Vocational programming

- Specialist supports youth in enrollment in vocational programs
- Specialist monitors and supports youth throughout the program

Unsubsidized employment

- Specialist assists youth in obtaining employment
- Resume building
- Job search
- Interview prep

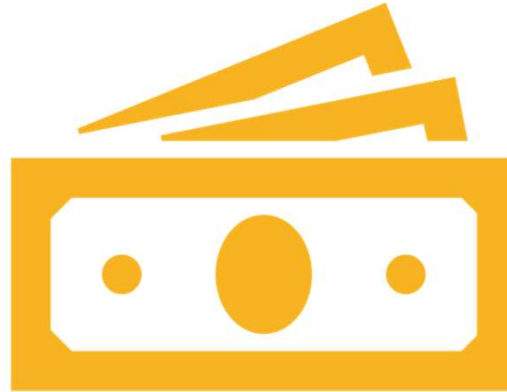
Supports youth who are not currently college bound by providing the skills, training and resources for a successful transition.

12

12

MAKING MONEY GROW (MMG)

- Allows young professionals 15 to 20 to OPEN A MATCHED SAVINGS ACCOUNT IN PARTNERSHIP WITH Capital Area Assests Builders (CAAB)
- Dedicated team member on site TO SUPPORT YOUTH AND THEIR TEAMS around financial education
- Funds can be used towards purchasing a CAR, a HOME, renting an APARTMENT, opening a SMALL BUSINESS, CAR INSURANCE, HEALTH INSURANCE, ANYTHING SCHOOL RELATED



13

13

EARNING POTENTIAL WITH MMG



14

14

YOUTH TRANSITIONAL SUPPORTS

Youth Transitional Planning Meetings

- Mandatory meetings that beginning at age 14 through transition from care

Jump Start Meetings:

- QA measure to identify and rectify systemic barriers
- Mandatory for all 20.5 year olds

OYE Enrichment Boot camp

- Staffed by OYE IL team for youth between placements or suspended (10 days max)

Transitional Care package

- Up to \$1,000 to support transition from care

Rapid Housing:

- SHORT TERM RENTAL ASSISTANCE (eligibility requirements)

Other Supports:
 Driver's Training
 High School Graduation Expenses
 Metro Transportation Funds
 Vital documents

15

15

TRANSITIONAL HOUSING PROGRAMS

• Wayne Place

- 18 month transitional housing program for male and females
- 40 shared apartment units, 20 for CFSA youth
- Case-management through program
- Eligibility Requirements

• The Mary Elizabeth House

- 24 month transitional housing program for mother's and their child/ren
- 11 apartment units
- Case-management through program
- Eligibility Requirements

16

16



**IT'S
YOUR
TURN!**

17