



Interagency Council on Homelessness

ERSO Committee



23 January 2022



Meeting Agenda



- I. Welcome & Call to Order (5 mins)**
 - a) Intros & Agenda Review**
 - b) Call for Partner Announcements/Updates**
- II. Discussion & Updates (75 mins)**
 - a) Review Winter Plan & Hypo Operations (25 mins)**
 - b) COVID Updates & Concerns (25 mins)**
 - c) 801 East Transition (25 mins)**
- III. Partner Announcements/Updates (5 mins)**
- IV. Summary and Adjournment (5 mins)**



Meeting Agenda



- I. Welcome & Call to Order (5 mins)
- II. Discussion & Updates (75 mins)**
 - a) Review Winter Plan & Hypo Operations (25 mins)**
 - i. Winter Plan Updates Approved 01/11 (10 mins)**
 - ii. Operational Shifts due to Winter Storms & Cold Alerts (15 mins)**
 - b) COVID Updates & Concerns (25 mins)**
 - c) 801 East Transition (25 mins)**
- III. Partner Announcements/Updates (5 mins)
- IV. Summary and Adjournment (5 mins)



Winter Plan Updates Approved 01/11



Executive Committee Clarifications/Recommendations

- ❖ COVID concerns/updates deferred to today's meeting
- ❖ Leveraging PEPV intake
 - For medical vulnerabilities or likely to match
 - Request for feedback on how to improve
- ❖ Updates to shelter options:
 - Bridge Facilities (Valley and Girard Place) removed
 - Blair (60 beds) added as LBS facility (previously used as TH)



Operational Shifts Due to Winter Storms



Goal for Discussion

- ❖ Identifying:
 - Challenges and gaps
 - Lessons learned from adjustments made

Context

- ❖ 3 major winter storms since Dec 12/22 mtg
 - Dates: 01/02 – 03, 01/14 – 17 and 01/20 – 24
 - Operational shifts: summarized in next 3 slides
- ❖ Cold Emergency in effect right now, with another winter storm anticipated for this weekend



Operational Shifts: 01/02 – 01/03



Winter Storm: Sun 01/02 overnight – Monday 01/03
Cold Weather Emergency: Mon 01/03 – Tues 01/04

❖ Shelter Hotline Operations

➤ interrupted on 01/03 from 9 am – 6 pm due to weather conditions

*might not make financial sense to commit to higher grade of vehicles because we don't have a lot of snow/inclement weather.

Could we have one vehicle designated for retro-fitting to get to emergency situations during rare snowstorms

*Prefer to improve communications/coordination with MPD, Ambulances, CRT and other partners to check on people sleeping outside

*overnight warming sites or working with outreach teams to have a location with a trusted partner that unsheltered individuals may be willing to go into

*typically, roads are passable, but the duration of the snow

*tracking daily demand for safety checks by locations. UPO not able to physically respond but are taking calls and noting location of safety checks to follow up as soon as conditions clear.

*Real-time sharing with outreach teams.

*previously rec centers (hypothermia sites) were available throughout the District, now relying on fewer facilities

*leveraging District citizens/volunteers, distributing train and bus passes, better coordination/communications to individuals experiencing homelessness

❖ Hours of Operation:

➤ Sherwood (Women) & Langdon (Men): open all day 01/03

➤ Blair Temporary Shelter (Men only): open all day 01/03

❖ Prep:

➤ Winter storm was not predicted so additional prep was not possible



Operation Shifts: 01/14 – 01/17



Winter Storm & Cold Weather Emergency

Fri 01/14 starting at 4 pm through Mon 01/17

- ❖ Shelter Hotline operations: normal, supported by OSSE
- ❖ Capacity Shifts:
 - Trinidad rec center (50 beds: 25 men and 25 women) brought online 01/10
- ❖ Shifts in Hours of Operation:
 - *difficult to negotiate with DPR because community is back to using rec centers w/ many activities scheduled (e.g. basketball tournaments scheduled)
 - Sherwood (women), Trinidad (men & women) & Langdon (men):
 - ✓ open from Sat evening thru Tues morning
 - ✓ meaning DPR closed Sun and Mon
 - Blair (men) & St. Josephine's (women) open Sat evening thru Tues morning
- ❖ Prep:
 - TCP delivered meals, shelter resources and PPE supplies in advance
 - Security coverage and janitorial services adjusted to accommodate shift in hours



Operation Shifts: 01/20 – 01/24



Cold Weather Emergency

Thurs 01/20 @ 4 pm until Mon 01/24 @ 7 am

- ❖ Normal Shelter Hotline operations supported by OSSE
- ❖ Hours of Operation:
 - Langdon (men) open from Thurs evening until Mon morning
 - Trinidad (now men only) & Sherwood (women):
 - ✓ Thurs from 7 pm to 7 am
 - ✓ Open from Friday evening to Monday Morning
 - Blair (men) open through Monday, 01/24
- *Blair operates 7 pm to 7 am. Not contracted to be available 24/7. Blair is better clarified as a hypothermia site and not a traditional LBS.**
- Downtown Day Center open from 10 am – 4 pm
- ❖ Capacity/Population Served:
 - Adam's Place Day Center (men) expansion from 30 to 45 beds
 - Trinidad (50 beds) now serving men only due to demand
- ❖ Prep:
 - TCP delivered meals, shelter resources and PPE supplies in advance
 - Security coverage and janitorial services adjusted to accommodate shift in hours



Meeting Agenda



- I. Welcome & Call to Order (5 mins)
- II. Discussion & Updates (75 mins)**
 - a) Review Winter Plan & Hypo Operations (25 mins)
 - b) COVID Updates & Concerns (25 mins)**
 - c) 801 East Transition (25 mins)
- III. Partner Announcements/Updates (5 mins)
- IV. Summary and Adjournment (5 mins)



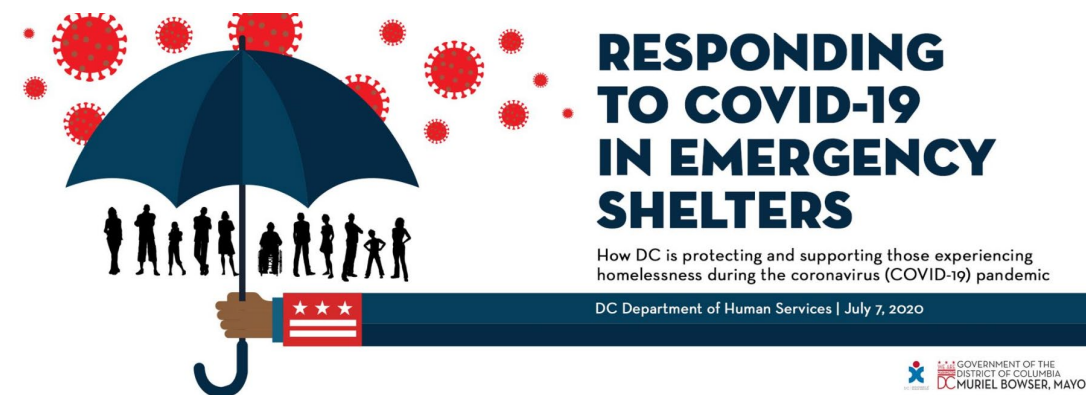
Human Services Data

Human Services Data as of January 6, 2022 (posted daily on coronavirus.dc.gov):

- Number of individuals in homeless service system who have tested positive for COVID since (date): 984
- Number of individuals in DHS isolation and quarantine sites: 285
- Total number of lives lost among individuals in the homeless service system: 25

Follow our progress:

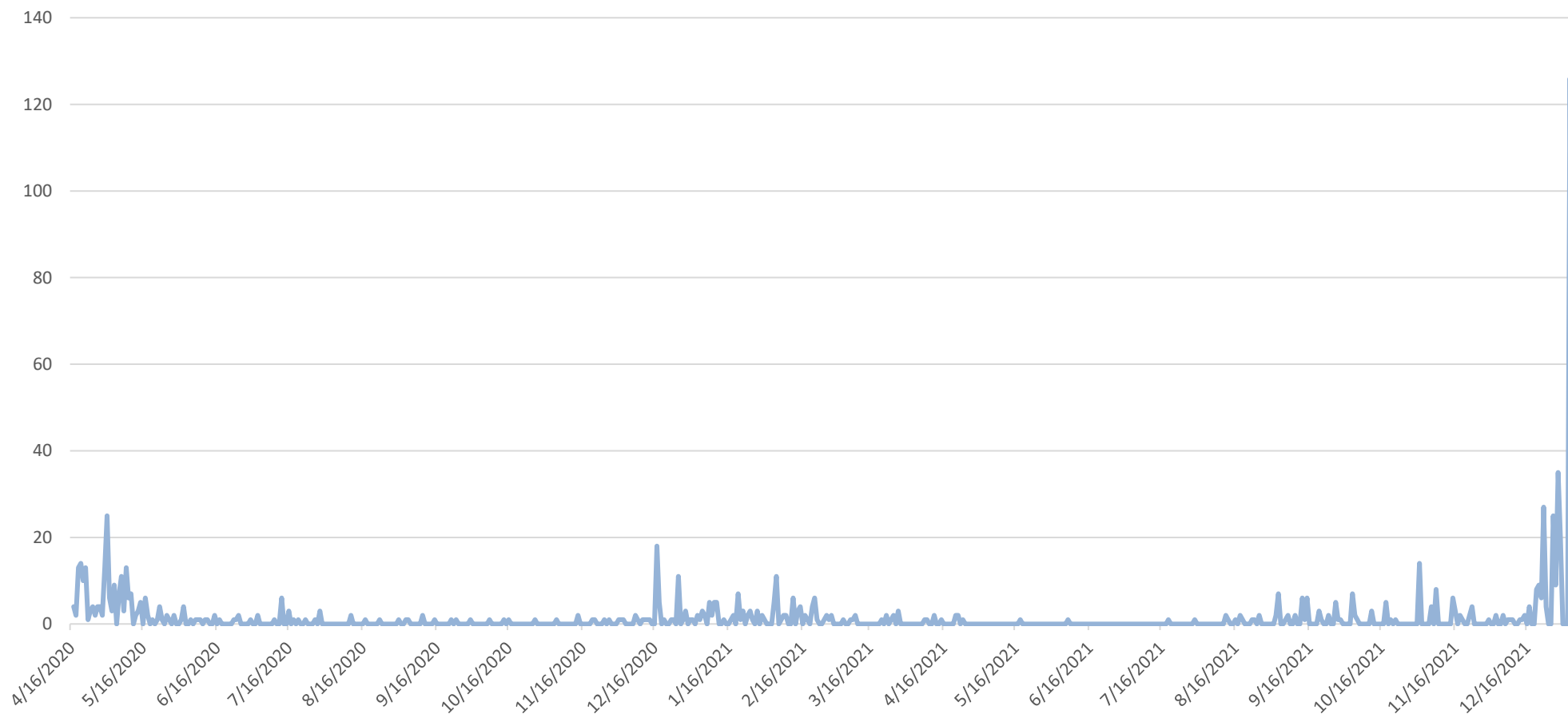
<https://dhs.dc.gov/storyboard>



Human Services Data – Update

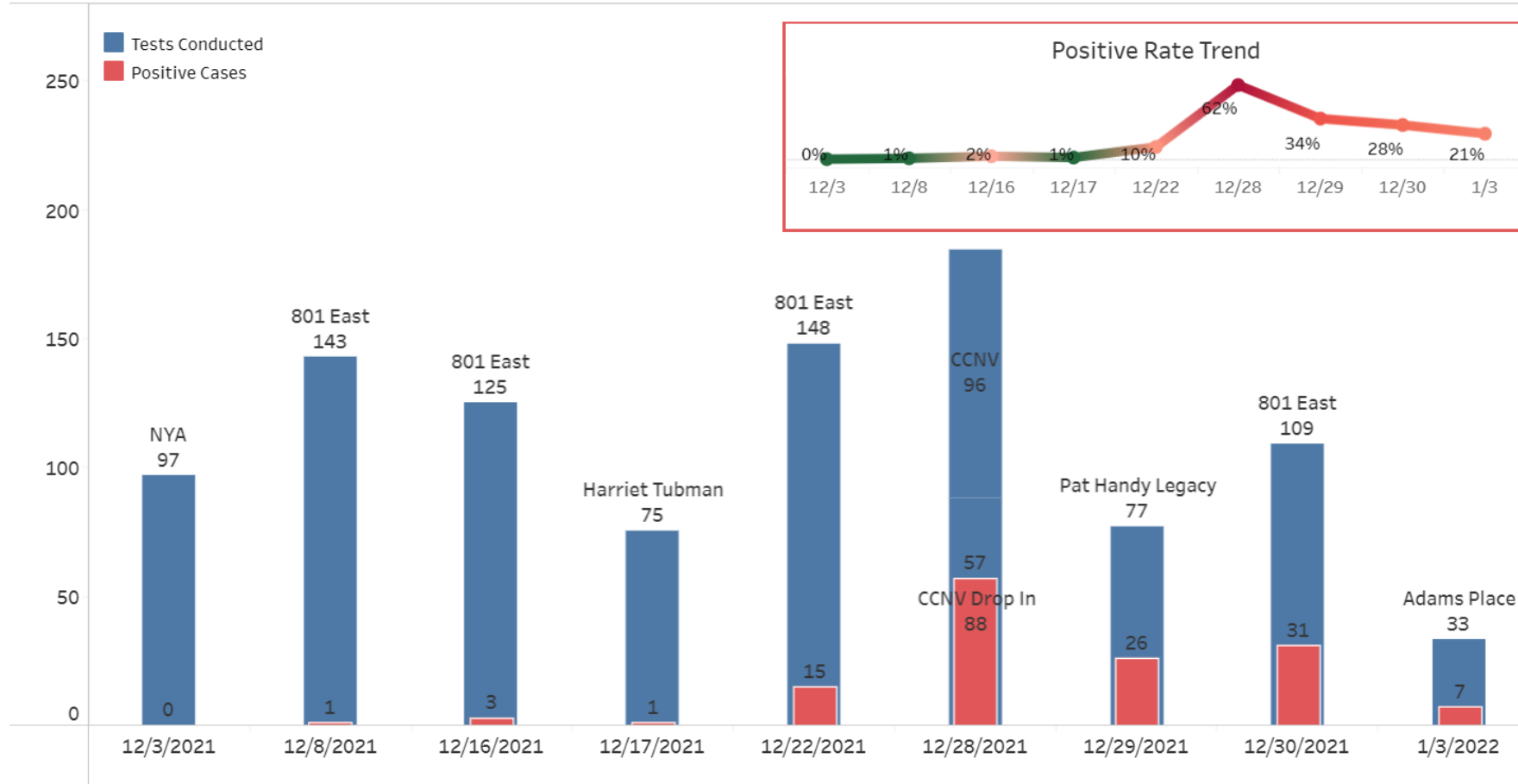
In Shelter Tested Positive (Cumulative)	24-Dec	27-Dec	28-Dec	29-Dec	30-Dec	03-Jan	04-Jan	05-Jan	06-Jan
801 East	0	2	0	0	0	27	5	1	0
Adams Place	0	0	0	0	1	0	6	0	0
Blair House	0	0	0	0	0	0	0	0	1
CCNV	0	0	3	22	14	18	1	1	0
Harriet Tub.	0	0	2	2	0	0	0	0	0
K. Greenleaf - Hypo	0	0	0	0	0	0	0	0	0
New York Ave	0	0	0	0	0	0	0	0	0
Pat Handy	0	1	0	0	0	0	2	1	1
PH Legacy	0	0	0	0	0	27	0	0	0
The Kennedy STFH	1	0	0	0	0	0	0	0	0
Unsheltered	2	3	0	10	0	15	0	0	4
PEPV	0	6	0	0	2	27	7	2	0
Daily Increase	4	25	9	35	20	126	25	6	7
Shelters with at least 1 positive case but <15 positive cases:	Adams Day Center/Eve's Place, Allies for Success, Calvary Transitional Housing, Calvary Reach Up TH, Casa Ruby, Covenant House – Rites of Passage; Safe House; Shine; and The Sanctuary, Davidson House, DC Doors – Evolution de Carlos and Steps to Stability, Ionia Whipper Home, Jordan House Crisis Beds, La Casa TRP, Naylor Road Family Shelter, Madison Shelter, New Transitions, Passages, Malcolm X (Spring 2020), Olaiya's Cradle, Park Road House, Re*Generation House, Rites of Passage, SBY/ILP, SMYAL Houses, The Summit, US VETS GPD, Wanda Alston, St. Josephine Bakhita, Sherwood Rec Center, Kennedy Rec Center, Langdon Hypo, Trinidad Rec Center, Hillcrest, The Brooks, The Horizon, Kennedy, The Triumph, The Sterling, and The AYA.								

Daily Increase of Positive Cases in Emergency Shelter



Tracking Cases in Emergency Shelter

Mass Testing Events

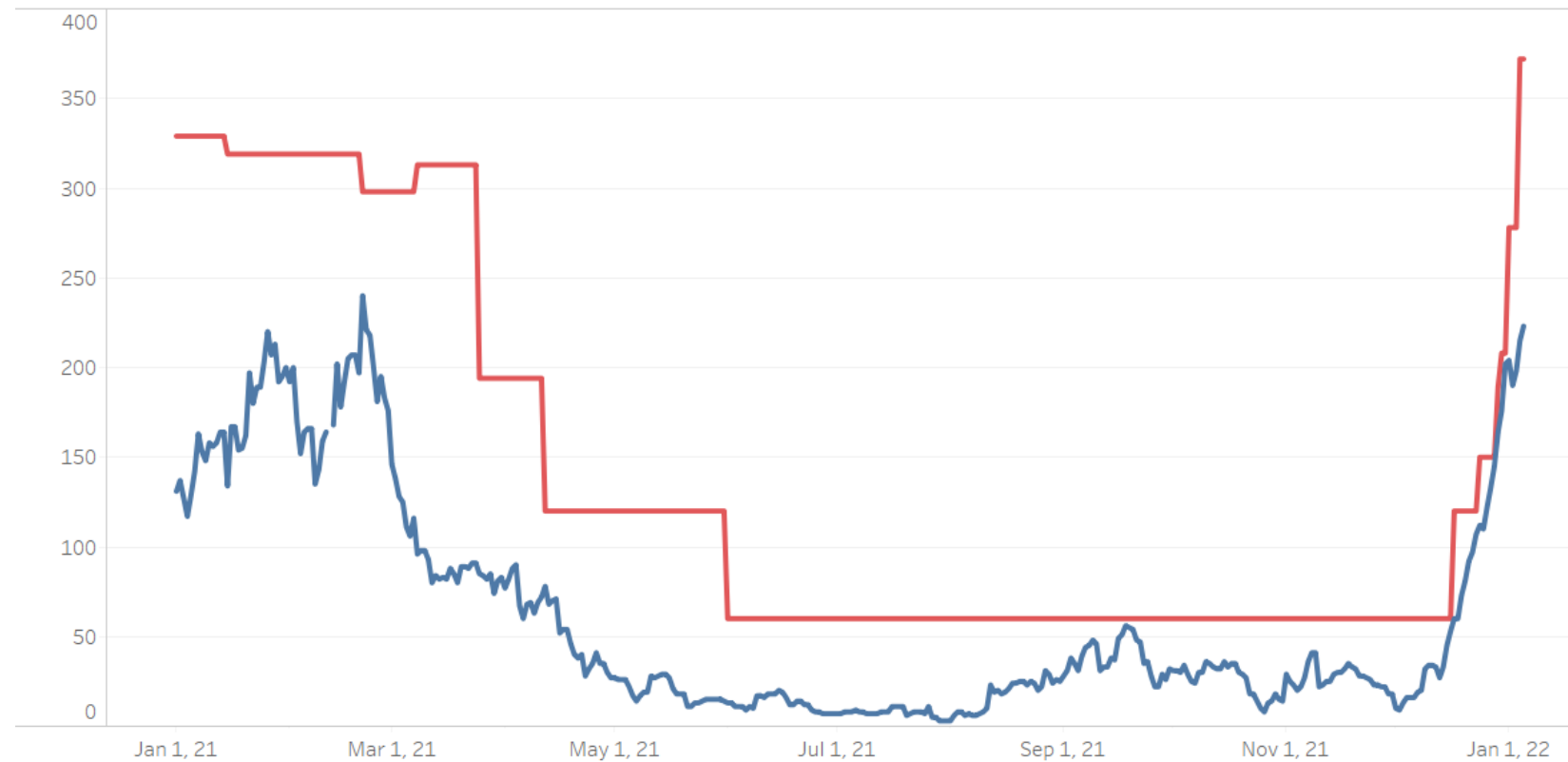


Note: The data includes the period from 10/1/2021 to Date as of 1/6/2022 7:02:22 AM

ISAQ Capacity

(as of Jan 5, 2022)

Isolation and Quarantine Rooms Occupied and Available (3)



Measure Names

- Hotel Rooms Occupied
- Total Hotel Rooms Available

- **372 rooms** (666 beds) across 3 ISAQ sites
- **144 rooms** (373 beds) remaining
- **223 persons** currently at ISAQ

Updates to ISAQ protocols

Updated ISAQ protocols as of 1/3/22:

- Positive clients: continue to refer to ISAQ
- Close contacts and clients with new COVID symptoms: test with rapid antigen tests and refer to ISAQ if positive, monitor for symptoms, retest

TCP is delivering rapid antigen kits to all congregate locations. Providers can use the [Resource Request form](#) to order more kits

COVID Safety Protocols - Masks

Masks are **required at all times while indoors** unless eating or sleeping! Reminders:

- Masks must be work **properly** to be effective
- Given Omicron is highly contagious, we recommend staff and clients protect themselves with more than just a cloth mask. Disposable surgical masks offer greater protection, and can also be worn over cloth masks. See [CDC Mask Guidance](#) for more information.

If you need additional masks, use the [Resource Request form](#) to request more supplies!

Vaccination and Testing

- **Vaccination accessibility**
 - Vaccinated 3,028 clients and staff through partnership with Unity Healthcare since January 2021 (538 clients have received booster shots at a Unity homeless clinic)
 - Dedicated clinics at low-barrier shelter sites (1/21-4/21)
 - Unity mobile clinics for encampments and hypothermia, 2x/week dedicated vaccinations (including Boosters) days rotating among shelters
- **Regular testing**
 - Daily testing based on rotating schedule of shelters (schedule amended as needed based on testing results)
 - Mass testing as needed per DC Health guidance (i.e. when positive case at shelter site)
 - Rapid antigen tests have been provided to supplement PCR testing at shelters and other congregate sites

Virginia Williams FRC

- VWFRC temporarily modified operations to provide remote services beginning on Thursday, December 30, 2021.
- **In person services scheduled to resume on Tuesday, January 18, 2022, at 8:30am.**
 - Since transitioning to a telework posture, VWFRC has assisted 155 families with mediation/division, connectivity to community resources and/or shelter placement.

Meeting Agenda



- I. Welcome & Call to Order (5 mins)
- II. Discussion & Updates (75 mins)**
 - a) Review Winter Plan & Hypo Operations (25 mins)
 - b) COVID Updates & Concerns (25 mins)
 - c) 801 East Transition (25 mins)**
- III. Partner Announcements/Updates (5 mins)
- IV. Summary and Adjournment (5 mins)



801 East: Transition to New Facility



Reminder: New facility includes 3 shelter wings + medical respite

Low-Barrier Shelter	192 beds
Work Beds (employed/in training/employment track)	96 beds
Seniors and Medically Frail	44 beds
Medical Respite	24 beds

Low-Barrier Shelter

- ❖ Immediately: Prioritizing clients from existing 801 E site

Specialized (Temporary Shelter) Beds

- ❖ Includes work beds and senior/medically frail beds.
- ❖ Clients will have 24-hour access and the ability to stay in the same bed until they exit to housing.
- ❖ Accepting a placement in specialized beds brings expectation that client will work with case manager on exit planning to facilitate greater flow through beds.

Medical Respite

- ❖ Considered a health care service (vs shelter).

Prioritization, length of stay, etc. determined by the medical provider.



801 East: Transition to New Facility



Updates from DHS:

- ❖ First residents move in tomorrow 1/27
- ❖ LBS wing is the priority, moving from old 801 East
- ❖ Have already identified Senior and Work-bed clients to transfer to new facility. Will prioritize old 801 East residents first
- ❖ Hope to be fully operational in the next 30 – 60 days

Feedback from Committee Members:

- ❖ Recognizing the Advisory Committee for 801 East Facility and ensuring that the Consumer Engagement Workgroup is included and updated on meetings and processes during the construction and transition.
 - Clarification for Melvyn Smith (DHS) has not stopped communicating with the Advisory Committee so want to make sure that the folks flagging this is still receiving the communications.
- ❖ Excitement tempered by the fact that it is shelter.
 - We don't want people to go to new shelters, we want folks to exit into housing!
 - Can we tell clients: give our shelter system a chance because it's easier to get housed out of shelter than out of encampments!



Meeting Agenda



- I. Welcome & Call to Order (5 mins)
- II. Discussion & Updates (75 mins)
- III. Partner Announcements/Updates (5 mins)**
- IV. Summary and Adjournment (5 mins)



Meeting Agenda



- I. Welcome & Call to Order (5 mins)
- II. Discussion & Updates (75 mins)
- III. Partner Announcements/Updates (5 mins)
- IV. **Summary and Adjournment (5 mins)**
 - a) **Break in February (proposed)**
***recommendation from Community for email update, especially from DHS re COVID, PEPV, Hypothermia and 801 East Transition**
 - a) **Next meeting: March 23, 1 – 2:30 PM**



