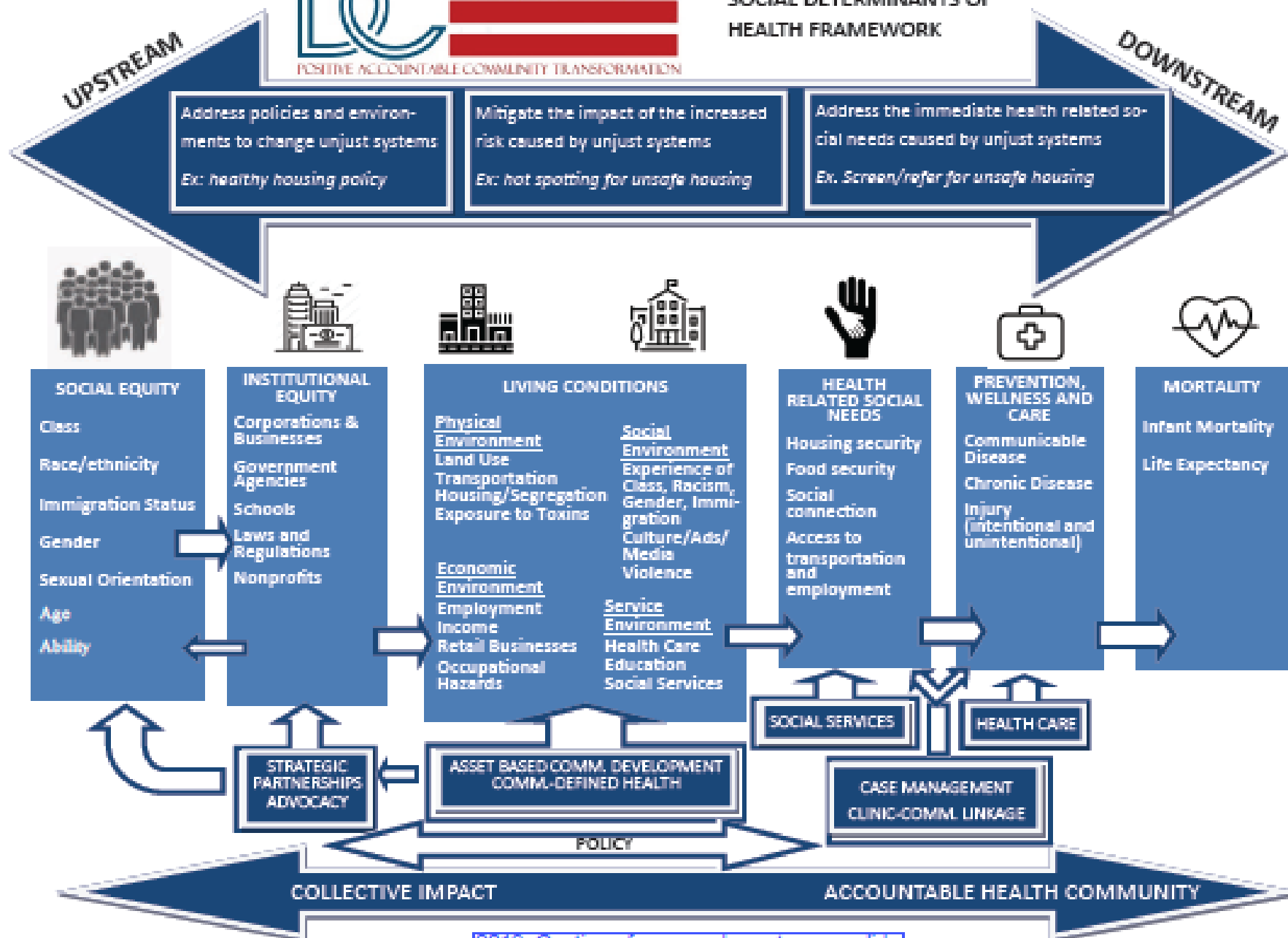




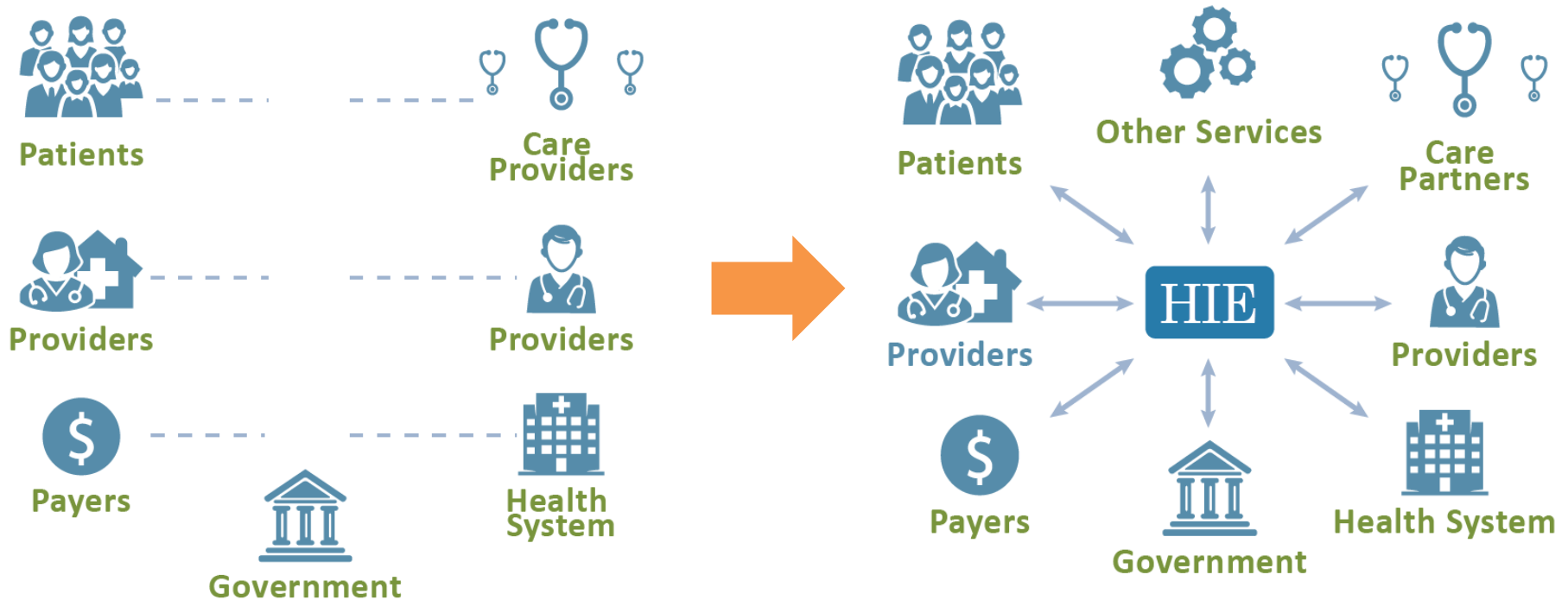
Addressing SDOH

**COMMUNITY RESOURCE
INFORMATION EXCHANGE
(CORIE) PLANNING INITIATIVE**



2019: Continue focus on downstream, solid beginning to upstream work

Health IT and HIE Connect a Disconnected Health System



Community Input Led to Focus on Social Determinants of Health

Beginning April 2017, DHCF held a series of discussions on social needs of District residents

- Explored District efforts to collect and use SDOH data
- Generated a set of strategies and tactics to improve health outcomes
- Held 80+ person meeting with national experts “level-set” current work and shared priorities
- Hosted 20-person workshop on strategies to address collection and use of social need data



DHCF Prioritized Four Areas to Improve Connection and Navigation



- **Support Transitions of Care**

- Help community service providers communicate across care settings, make timely referrals and exchange summary records, and assess resources such as social supports



- **Collect and Use Social Determinants of Health Data**

- Support health care and social service providers to maximize the effectiveness of interventions to support individual health. Encourage standardized SDH information collection to facilitate whole person care.



- **Analytics for Population Health**

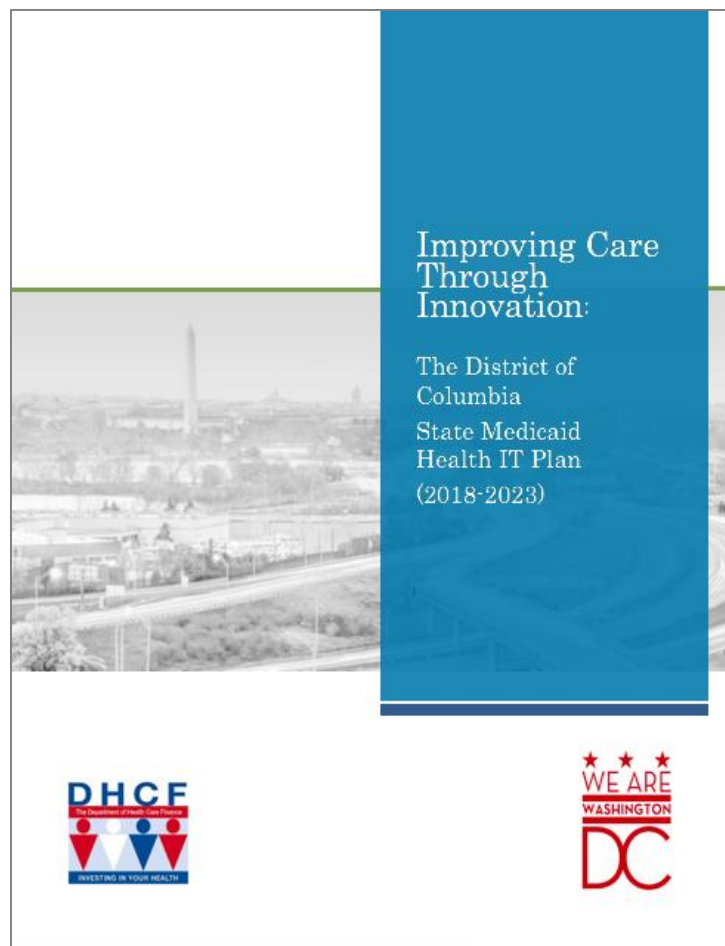
- Facilitate stakeholders ability to use data tools, algorithms and visualizations to target improvements in care quality and outcomes, and support providers' value-based purchasing efforts.



- **HIE for Public Health**

- Work with existing DOH programs to expand public health HIE connectivity, facilitate public health reporting, and support public health registries for all providers in the District.

2018 State Medicaid Health IT Plan



- » Opportunities to Improve Health Care
- » Current Landscape of Health IT and HIE
- » Stakeholder Perspectives and Priorities
- » Health IT and HIE Roadmap
 - District health IT and HIE goals
 - Four use cases that drive priorities
 - Proposed projects and timeline
- » Evaluation Framework to Measure Health IT and HIE Improvements
- » Appendices and Supporting Materials

Two Grants Comprise the Community Resource Information Exchange (CoRIE) Project

Phase 1: CRI (THIS GRANT)

*Community Resource Inventory Needs Assessment and Design Grant**

Develop
Standardized
Screening
Tool

Design and
Develop
Community
Resource
Inventory

Gather
Technical
Requirements
for
Community
Resource
Information
Exchange
Technical
Solution

Phase 2: CoRIE

Community Resource Information Exchange Technical Solution Development Grant

Develop and Implement Community Resource Information Exchange Technical Solution with the following possible capabilities:

Implement
Standardized
Screening Tool to
address individual
or family social
needs

Utility to
exchange
screening results
with other
providers

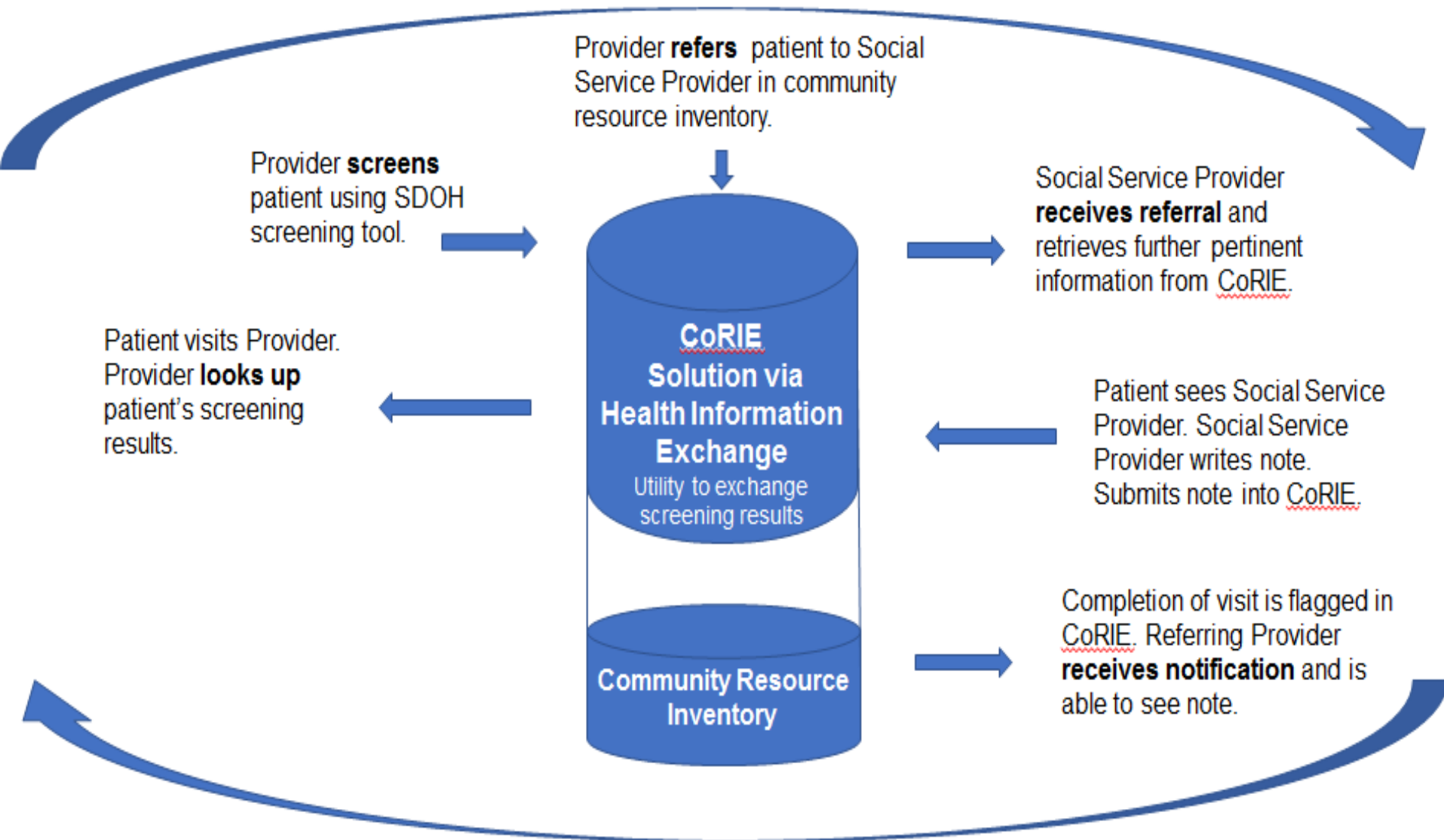
Utilize Community
Resource
Inventory

Referral Function
allowing providers
to make referrals to
social service
providers

Close-Loop
Function allowing
referring providers
to be notified
patient has seen
referred provider

*Also known as the CoRIE Planning Initiative,
Awarded to DCPCA,

Information Flow of CoRIE



Overarching question for the CoRIE Planning Initiative: what solutions should DHCF prioritize in building a system that allows for this

CoRIE Planning Initiative Discussion

- **Use:** How does your organization want to use health/social needs data?
- **Technology:** How well do your organization's existing technical solutions support screening, exchange of health/social needs information, and referral?
- **Governance (privacy, security, oversight):** What governance structures are necessary and feasible to promote health/social needs data collection, exchange and referral?
- **Future state/change:** What are the potential benefits or disadvantages of standardizing the collection and exchange of health/social needs data?